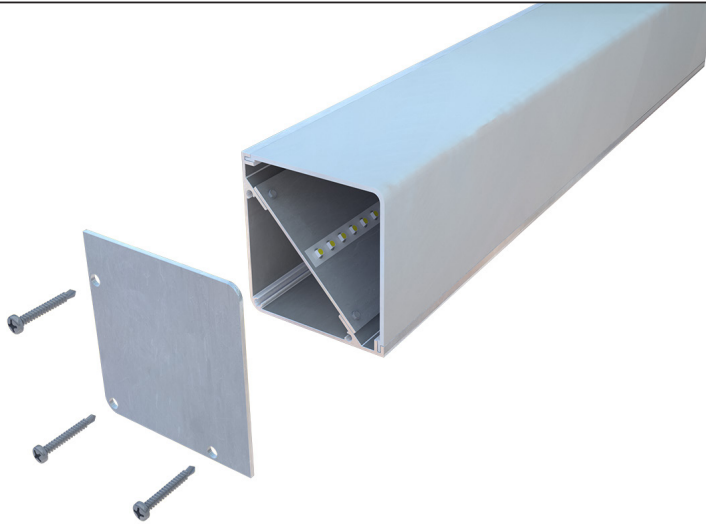
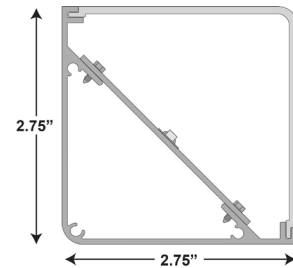


PROJECT NAME:

TYPE:



Neotek
LIGHTING

PS-360-LO

- The Neotek PS-360-LO is a straight self-contained light emitting diode fixture, available in lengths 18" to 8'.
- Extrusion consist of two parts (Back and Front) and shall be made of aluminum. The extrusion features a standard mill finish or can also be custom anodized.
- Features .125 diameter holes for fastening the end plate or steel pins for attaching of adjacent fixtures. Set screws for attachment to front extrusion. Will house a 24v led power supply and if applicable, the DMX decoder for RGB/RGBW applications. Can be used as a wire way.
- LED's: High output 3528 binned chips, 24v DC operating voltage. Consuming 3.00 watts per foot – available in the colors listed below. The chips and circuitry are fastened to the aluminum fixture. The strips produce 420 lumens per foot measured at 1.5ft from the fixture.
- Power Supply: The power supply is a solid-state power supply mounted inside the back extrusion or remotely for serviceability. The power supply will be rated for the fixture size and wattage consumption required.
- End Caps: They shall be an aluminum end cap on exposed ends with or without wire holes as needed.
- Lens: The fixture will have a lens made of UV protected acrylic and will snap into the interior sides of the front extrusion. These lenses are recognized by UL and have a flame class of 94HB.
- All LED linear fixtures are dimmable using various types of dimmers. RGB/RGBW/RGBA can be controlled with any DMX 512 protocol, however assistance is available from Neotek for more specific control solutions.

COLOR OF LED LIGHT:

☐ 24K
 ☐ 28K
 ☐ 30K
 ☐ 35K
 ☐ 40K
 ☐ 50K
 ☐ 65K
 ☐ Red
 ☐ Green
 ☐ Blue
 ☐ Amber
 ☐ RGB
 ☐ RGBW
 ☐ Other

LENS:

Frosted

INPUT VOLTAGE:
☐ 120v
☐ 277V
POWER SUPPLY/DMX DECODER LOCATIONS
☐ INTERNAL
☐ EXTERNAL
DIMMING TYPE:
☐ 0-120VL(LV)
☐ 0-10V
FIXTURE FINISH:
☐ Standard Mill
☐ Custom _____
APPLICATION:
☐ Interior IP00
☐ Exterior IP67
JOB INFORMATION:**DATE:****PAGE #:**

--