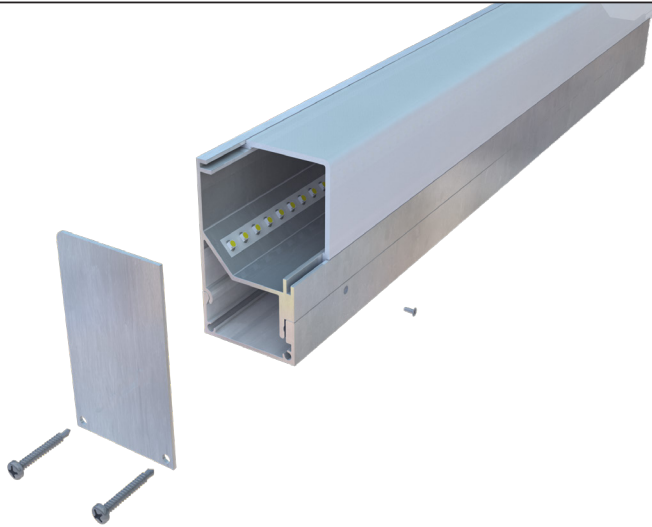


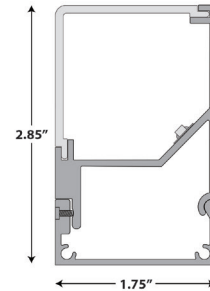
PROJECT NAME:

TYPE:



Neotek
LIGHTING

PS-354-LO



- The Neotek PS-354-LO is a straight self-contained light emitting diode fixture, available in lengths 18" to 8'.
- Extrusion consist of two parts (Back and Front) and shall be made of aluminum. The extrusion features a standard mill finish or can also be custom anodized.
- Back extrusion: Features .125 diameter holes for fastening the end plate or steel pins for attaching of adjacent fixtures. Set screws for attachment to front extrusion. Will house a 24v led power supply and if applicable, the DMX decoder for RGB/RGBW applications. Can be used as a wire way.
- Front extrusion: features LED's mounted inside will secure onto the back extrusion by way of a "hook" and set screws. Lens is attached by snapping into the extrusion.
- LED's: High output 3528 binned chips, 24v DC operating voltage. Consuming 3.00 watts per foot - available in the colors listed below. The chips and circuitry are fastened to the aluminum fixture. The strips produce 425 lumens per foot measured at 1.5ft from the fixture.
- Power Supply: The power supply is a solid-state power supply mounted inside the back extrusion or remotely for serviceability. The power supply will be rated for the fixture size and wattage consumption required.
- End Caps: They shall be an aluminum end cap on exposed ends with or without wire holes as needed.
- Lens: The fixture will have a lens made of UV protected acrylic and will snap into the interior sides of the front extrusion. These lenses are recognized by UL and have a flame class of 94HB. Offered in frosted.
- All LED linear fixtures are dimmable using various types of dimmers. RGB/RGBW/RGBA can be controlled with any DMX 512 protocol, however assistance is available from Neotek for more specific control solutions.

COLOR OF LED LIGHT:

☐ 24K
 ☐ 28K
 ☐ 30K
 ☐ 35K
 ☐ 40K
 ☐ 50K
 ☐ 65K
 ☐ Red
 ☐ Green
 ☐ Blue
 ☐ Amber
 ☐ RGB
 ☐ RGBW
 ☐ RGBA

LENS:

Frosted

INPUT VOLTAGE:

☐ 120v
 ☐ 277V

POWER SUPPLY/DMX DECODER LOCATIONS

☐ INTERNAL
 ☐ EXTERNAL

DIMMING TYPE:

☐ 0-120VL(LV)
 ☐ DMX512

FIXTURE FINISH:

☐ Standard Mill
 ☐ Custom _____

APPLICATION:

☐ Interior IP00
 ☐ Exterior IP67

JOB INFORMATION:

DATE:

PAGE #:

--