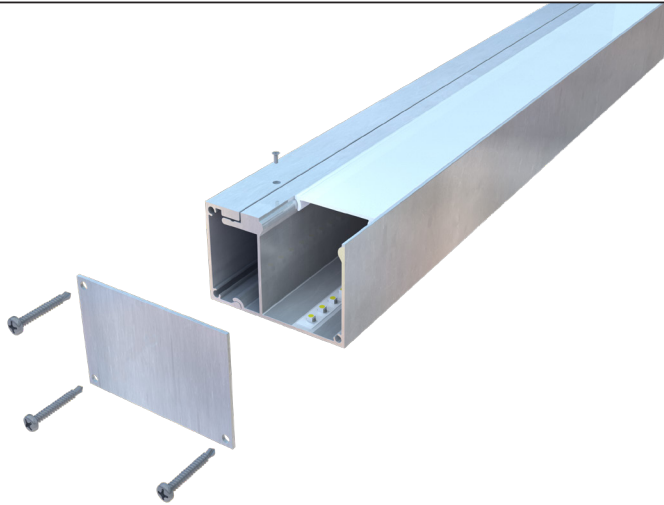


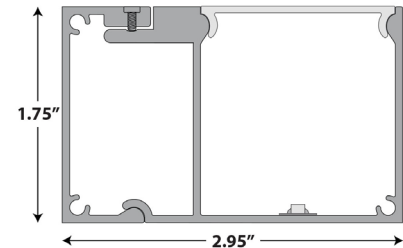
PROJECT NAME:

TYPE:



**Neotek**  
LIGHTING

**PS-353-LO**



- The Neotek PS-353-LO is a straight self-contained light emitting diode fixture, available in lengths 18" to 8'.
- Extrusion consist of two parts (Back and Front) and shall be made of aluminum. The extrusion features a standard mill finish or can also be custom anodized.
- Back extrusion: Features .125 diameter holes for fastening the end plate or steel pins for attaching of adjacent fixtures. Set screws for attachment to front extrusion. Will house a 24v led power supply and if applicable, the DMX decoder for RGB/RGBW applications. Can be used as a wire way.
- Front extrusion: features LED's mounted inside will secure onto the back extrusion by way of a "hook" and set screws. Lens is attached by snapping into the extrusion.
- LED's: High output 3528 binned chips, 24v DC operating voltage. Consuming 3.00 watts per foot - available in the colors listed below. The chips and circuitry are fastened to the aluminum fixture. The strips produce 425 lumens per foot measured at 1.5ft from the fixture.
- Power Supply: The power supply is a solid-state power supply mounted inside the back extrusion or remotely for serviceability. The power supply will be rated for the fixture size and wattage consumption required.
- End Caps: They shall be an aluminum end cap on exposed ends with or without wire holes as needed.
- Lens: The fixture will have a lens made of UV protected acrylic and will snap into the interior sides of the front extrusion. These lenses are recognized by UL and have a flame class of 94HB. Offered in frosted.
- All LED linear fixtures are dimmable using various types of dimmers. RGB/RGBW/RGBA can be controlled with any DMX 512 protocol, however assistance is available from Neotek for more specific control solutions.

**COLOR OF LED LIGHT:**

☐ 24K  
 ☐ 28K  
 ☐ 30K  
 ☐ 35K  
 ☐ 40K  
 ☐ 50K  
 ☐ 65K  
 ☐ Red  
 ☐ Green  
 ☐ Blue  
 ☐ Amber  
 ☐ RGB  
 ☐ RGBW  
 ☐ RGBA

**LENS:**

Frosted

**INPUT VOLTAGE:**

☐ 120v  
 ☐ 277V

**POWER SUPPLY/DMX DECODER LOCATIONS**

☐ INTERNAL  
 ☐ EXTERNAL

**DIMMING TYPE:**

☐ 0-120VL(LV)  
 ☐ DMX512

**FIXTURE FINISH:**

☐ Standard Mill  
 ☐ Custom \_\_\_\_\_

**APPLICATION:**

☐ Interior IP00  
 ☐ Exterior IP67

**JOB INFORMATION:**

DATE:

PAGE #:

--