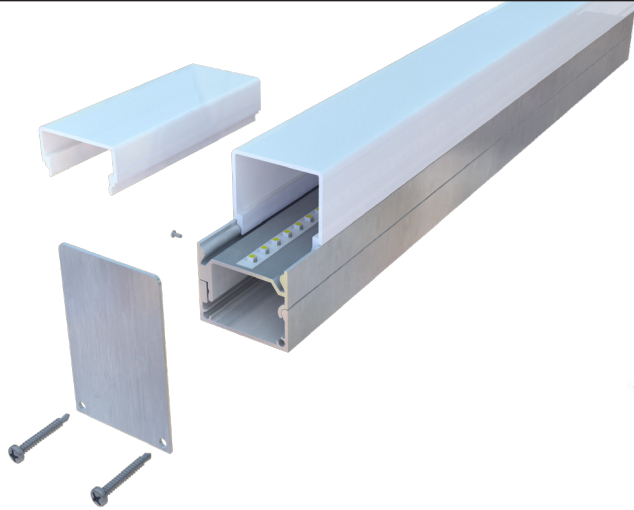
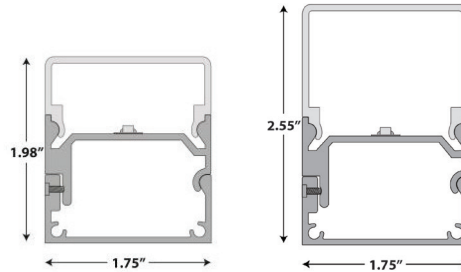


PROJECT NAME:	TYPE:
----------------------	--------------



PS-351-LO



- The Neotek PS-351-LO is a straight self-contained light emitting diode fixture, available in lengths 18" to 8'.
- Extrusion consist of two parts (Back and Front) and shall be made of aluminum. The extrusion features a standard mill finish or can also be custom anodized.
- Back extrusion: Features .125 diameter holes for fastening the end plate or steel pins for attaching of adjacent fixtures. Set screws for attachment to front extrusion. Will house a 24v led power supply and if applicable, the DMX decoder for RGB/RGBW applications. Can be used as a wire way.
- Front extrusion: features LED's mounted inside will secure onto the back extrusion by way of a "hook" and set screws. Lens is attached by snapping into the extrusion.
- LED's: High output 3528 binned chips, 24v DC operating voltage. Consuming 3.00 watts per foot - available in the colors listed below. The chips and circuitry are fastened to the aluminum fixture. The strips produce 425 lumens per foot measured at 1.5ft from the fixture.
- Power Supply: The power supply is a solid-state power supply mounted inside the back extrusion or remotely for serviceability. The power supply will be rated for the fixture size and wattage consumption required.
- End Caps: They shall be an aluminum end cap on exposed ends with or without wire holes as needed.
- Lens: The fixture will have a lens made of UV protected acrylic and will snap into the interior sides of the front extrusion. These lenses are recognized by UL and have a flame class of 94HB. Offered in two heights of frosted lens.
- All LED linear fixtures are dimmable using various types of dimmers. RGB/RGBW/RGBA can be controlled with any DMX 512 protocol, however assistance is available from Neotek for more specific control solutions.

COLOR OF LED LIGHT:			
<input type="checkbox"/> 24K	<input type="checkbox"/> 28K	<input type="checkbox"/> 30K	<input type="checkbox"/> 35K
<input type="checkbox"/> 40K	<input type="checkbox"/> 50K	<input type="checkbox"/> 65K	<input type="checkbox"/> Red
<input type="checkbox"/> Green	<input type="checkbox"/> Blue	<input type="checkbox"/> Amber	<input type="checkbox"/> RGB
<input type="checkbox"/> RGBW	<input type="checkbox"/> RGBA		
LENS HEIGHT:	INPUT VOLTAGE:	POWER SUPPLY/DMX DECODER LOCATIONS	DIMMING TYPE:
<input type="checkbox"/> .62 <input type="checkbox"/> 1.24	<input type="checkbox"/> 120v <input type="checkbox"/> 277V	<input type="checkbox"/> INTERNAL <input type="checkbox"/> EXTERNAL	<input type="checkbox"/> 0-120VL(LV) <input type="checkbox"/> DMX512
FIXTURE FINISH:		APPLICATION:	
<input type="checkbox"/> Standard Mill <input type="checkbox"/> Custom _____		<input type="checkbox"/> Interior IP00 <input type="checkbox"/> Exterior IP67	
JOB INFORMATION:			DATE:
			PAGE #: